

DSI3 Software licenses

-Seskion GmbH-

Content:

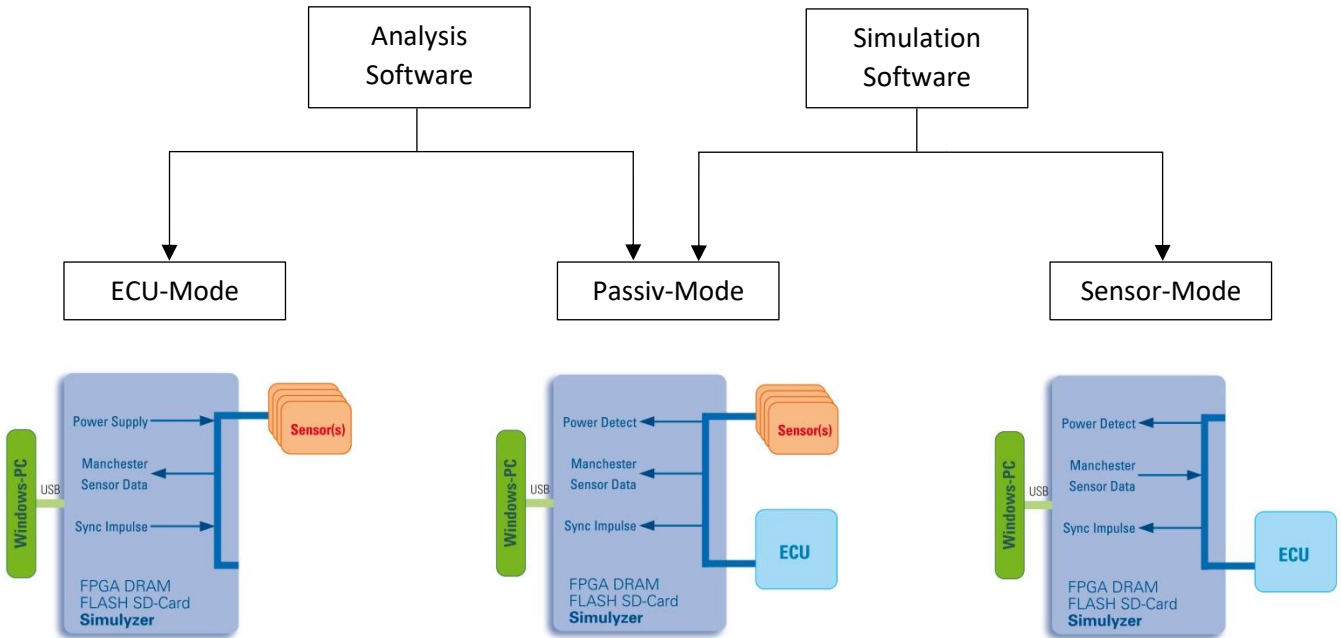
- Which DSI3-Windows Software license
- Software license for DSI3 Sensor Model

| | |
|----------|------------------------------|
| Version: | (1.0) 08.12.2021 – Creation |
| | (1.1) 21.03.2022 – new topic |
| | |
| | |

DSI3 Software licenses

Which DSI3-Windows Software license

Which DSI3-Windows software you need depends on your operating mode. If you use the ECU mode to measure sensors, you need the "Windows Software Package Analysis" with part number 3.3001. If you use the sensor mode to measure an ECU, you need the "Windows Software Package Sensor Simulation" with part number 3.3002. If you use the ECU mode and the Sensor Mode you need both software licenses. The Passive Mode to operate as a neutral observer between ECU and sensors is included in both software packages.



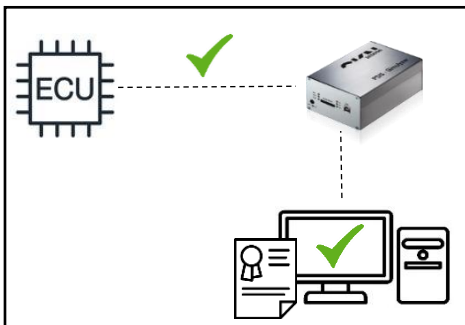
Software license for DSI3 Sensor Model

****This Sensor Model is needed if you want to simulate a sensor with the Simulyzer. So you want to use the Sensor-Mode****

Because each sensor is different, the sensors and their parameters must be implemented so that the ECU still thinks that the correct sensor is connected. SPI and DSI3 are not standardized bus protocols and differ in their communication. PS15 for example is a standardized bus protocol and therefore does not require a Sensor Model.

For the implementation of the sensor we need the sensor specification to create the sensor model. For this we need about 4-6 working days from the time of sending the specification.

With Sensor Model License:



Without Sensor Model License:

