

Simulyzer-Software Operating Help

-Seskion GmbH-

Content:

- Download the Simulyzer software
- Starting the Simulyzer software
- Overview of the graphical user interface
- First measurement with connected Simulyzer hardware
- Shortcuts
 - Moving the graphical measurement
 - Zooming in the graphical measurement
 - Shifting the graphical measurement

Version:	(1.0) 05.11.2021 - Creation
	(1.1) 03.12.2021 - Small improvement (Download)

Simulyzer-Software Operating Help

The software for our simulyzer boxes can be downloaded from our website without any problems. Here in the example this is illustrated with the PSi5 Simulyzer software. For any other software this process is identical. First go to <https://www.seskion.de/produkte/> to select your hardware or software. If you have then selected one of our products, you will find the following overview on the page:

Software

Specifications

Helpful links

Article numbers

- Standard Windows Gui application (optional): The protocol-specific Gui application offers a wide range of settings from the definition of signals, baud rates and error detection to trigger events. The visualization of the PSi5 bus communication facilitates troubleshooting and can also be easily saved. The PSi5 data is recorded with time stamps, whereby both import and export of data is possible.
- API-ANSI-C (included in the box)
- LabVIEW Lib (optional)
- EMC Test (optional)
- Sensor Programmer-Software (optional)
- Sensor test software for up to 5 PSi5 boxes (optional)

Latest versions:

Version	Date	Download
V2.6.23	12.10.2021	PSi5-SimulyzerSetup_V2_6_23.msi
V2.6.22	01.12.2020	PSi5-SimulyzerSetup_V2_6_22.msi
V2.6.21.1	01.09.2020	PSi5-SimulyzerSetup_V2_6_21_1.msi
V2.6.20	09.10.2019	PSi5-SimulyzerSetup_V2_6_20.msi
V2.6.17	14.11.2018	PSi5-SimulyzerSetup_V2_6_17.msi
V2.6.15	15.07.2018	PSi5-SimulyzerSetup_V2_6_15.msi
V2.6.8	10.11.2016	PSi5-SimulyzerSetup_V2_6_8.msi


Get Download registration

If you are downloading software from us for the first time, you will need to register for free. To do this, click on **Get Download registration** at the bottom left. You will now be forwarded to the registration page, where you can enter three mandatory details as well as other optional details.

Registration
Registration for the Special-Support
Already registered but lost your password? Check out our free [Password Lost-Support](#)

Surname *
Forename *
Email *
Company
ZIP*
Country
Street / No.
City
Phone
Password
We send you a password on your Email-Address!

☐ I agree that SesKion GmbH may contact me and store the data I have provided. See [privacy policy](#)


Anti-Spam Check *

Send

To be able to download the latest software now, please go to the listed software versions as shown in the first screenshot. To download the latest version, please look at the version number and date. For the download please click on the respective version on the right side under Download.

Now you can download the latest version of our Software. Make sure that you have the newest one to get all the newest features. The software is continuously updated.

Version	Date	Download
V2.6.23	12.10.2021	PSi5-SimulyzerSetup_V2_6_23.msi
V2.6.22	01.12.2020	PSi5-SimulyzerSetup_V2_6_22.msi
V2.6.21.1	01.09.2020	PSi5-SimulyzerSetup_V2_6_21_1.msi
V2.6.20	09.10.2019	PSi5-SimulyzerSetup_V2_6_20.msi
V2.6.17	14.11.2018	PSi5-SimulyzerSetup_V2_6_17.msi
V2.6.15	15.07.2018	PSi5-SimulyzerSetup_V2_6_15.msi
V2.6.8	10.11.2016	PSi5-SimulyzerSetup_V2_6_8.msi

A login window will appear where you can log in with your registered e-mail address and the password we sent you.

Anmelden
https://www.seskion.de

Nutzername
Passwort

Anmelden
Abbrechen

If the Microsoft Defender should report, you can ignore it and select **Run anyway**.

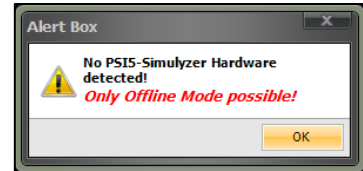
Install the software as specified. A desktop link will be created automatically.

All files can be found under:
„C:\Program Files (x86)\SesKion GmbH“

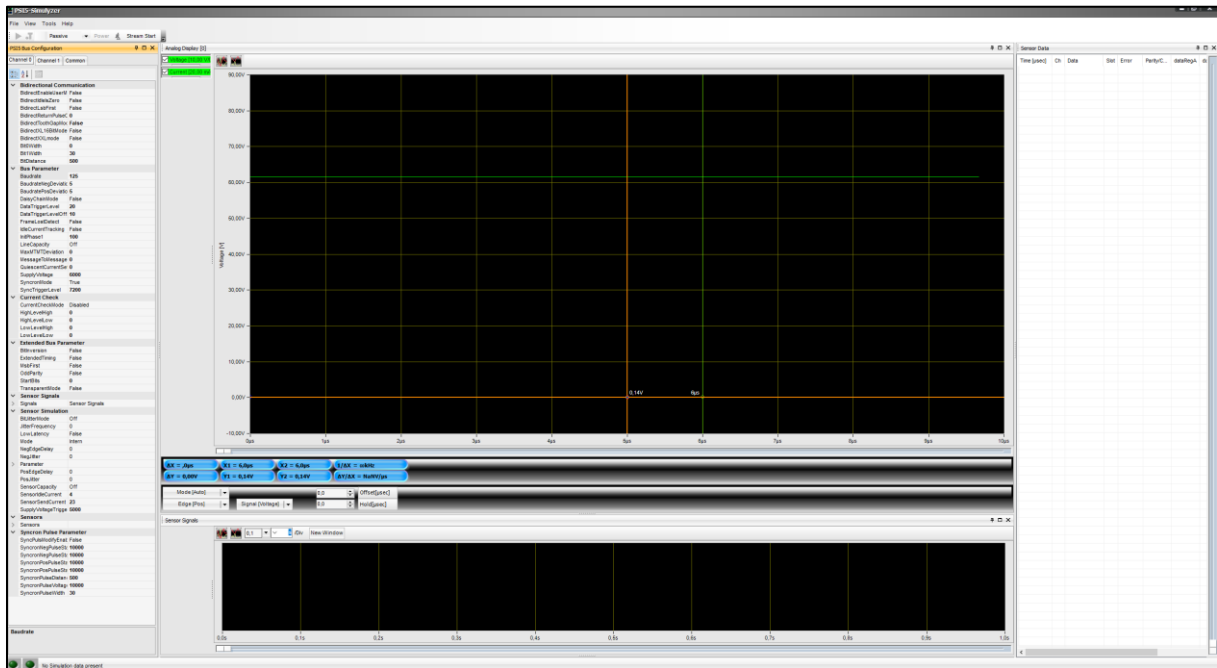


Simulyzer-Software Operating Help

If you have not yet connected a Simulyzer box to the PC, a short note will appear to inform you that no box has been detected and that the software will therefore only work in offline mode.



If a Simulyzer box is connected to the PC, or if you have closed the message box with **OK**, you will now see the interface of the Simulyzer software:



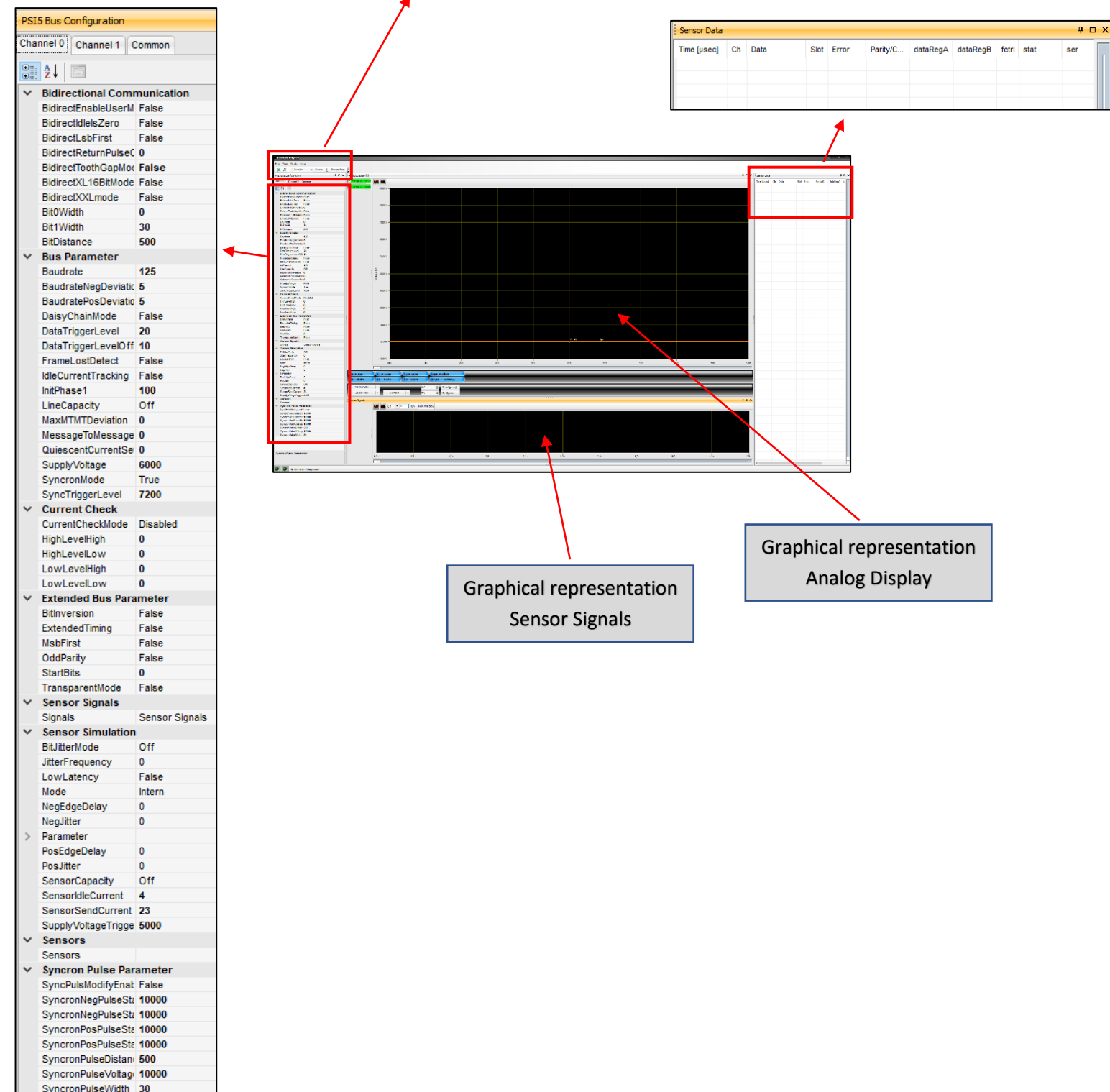
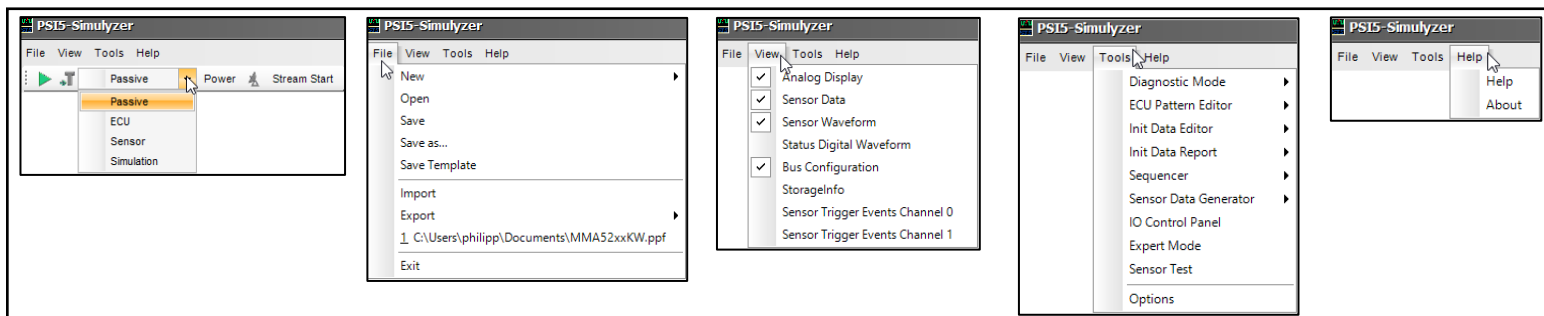
Without a corresponding software license, which is bound to either PC-ID or Simulyzer-Box, you can only view the interface and the individual menu items. For measurements and further functionalities a license is mandatory.

For a PC-ID bound license we send you a file named "seskionLicense.xml". You have to save this file in the folder of the respective Simulyzer software. In this example with a PS15 Simulyzer software the file would have to be saved in the following folder: "C:\Program Files (x86)\SesKion GmbH\PS15-Simulyzer".

If you have a Simulyzer box with an integrated software license, then it is only necessary to connect the box to the PC in order to be able to use all functionalities.

Simulyzer-Software Operating Help

Overview of the graphical user interface

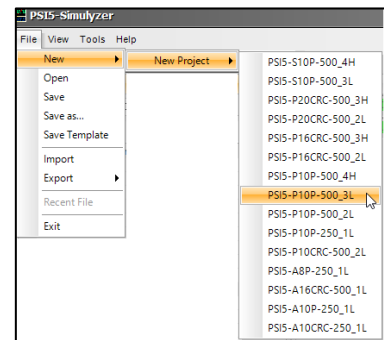


PSI5 Inertial Sensor

The MMA52xxKW family, a SafeAssure solution, includes the AKLV27 and PSI5 Version 1.3 compatible overdamped X-axis satellite accelerometers.

Features

- $\pm 60g$ to $\pm 480g$ Full-Scale Range
- Selectable 400 Hz, 3 Pole, or 4 pole Low-Pass Filter
- Single Pole High Pass Filter with Fast Startup and Output Rate Limiting
- PSI5 Version 1.3 Compatible
 - **PSI5-P10P-500/3L Compatible**
 - Programmable Time Slots with 0.5 μs Resolution
 - Selectable Baud Rate: 125 kBaud or 190.5 kBaud
 - Selectable Data Length: 8 or 10 bits
 - Selectable Error Detection: Even Parity, or 3-bit CRC
 - Optional Daisy Chain with External Low Side Switch
 - Two-Wire Programming Mode



The screenshot displays the NI-MAX software interface. The main window shows a waveform plot with a green trace and a red trace. The green trace has several sharp peaks, while the red trace has several sharp dips. The plot is titled "Waveform Plot" and has a time axis ranging from 0.00 to 0.05 seconds. The y-axis is labeled "Amplitude" and ranges from -10.00 to 10.00. The plot is titled "Waveform Plot" and has a time axis ranging from 0.00 to 0.05 seconds. The y-axis is labeled "Amplitude" and ranges from -10.00 to 10.00.

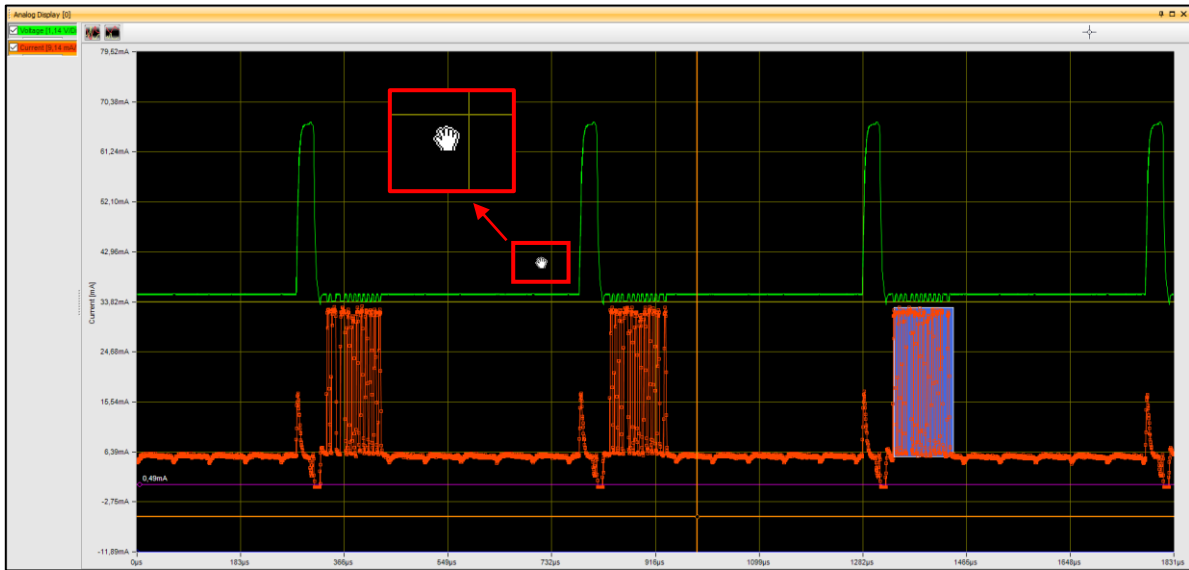
Below the plot, there is a table of test results. The table has columns for "Test Name", "Status", "Error", "Pass/Fail", "Pass/Fail", "Pass/Fail", and "Pass/Fail". The table contains several rows of data, including "Test Name", "Status", "Error", "Pass/Fail", "Pass/Fail", "Pass/Fail", and "Pass/Fail".

At the bottom of the interface, there is a "Properties" pane showing various parameters and their values. The parameters include "Test Name", "Status", "Error", "Pass/Fail", "Pass/Fail", "Pass/Fail", and "Pass/Fail".

Simulyzer-Software Operating Help

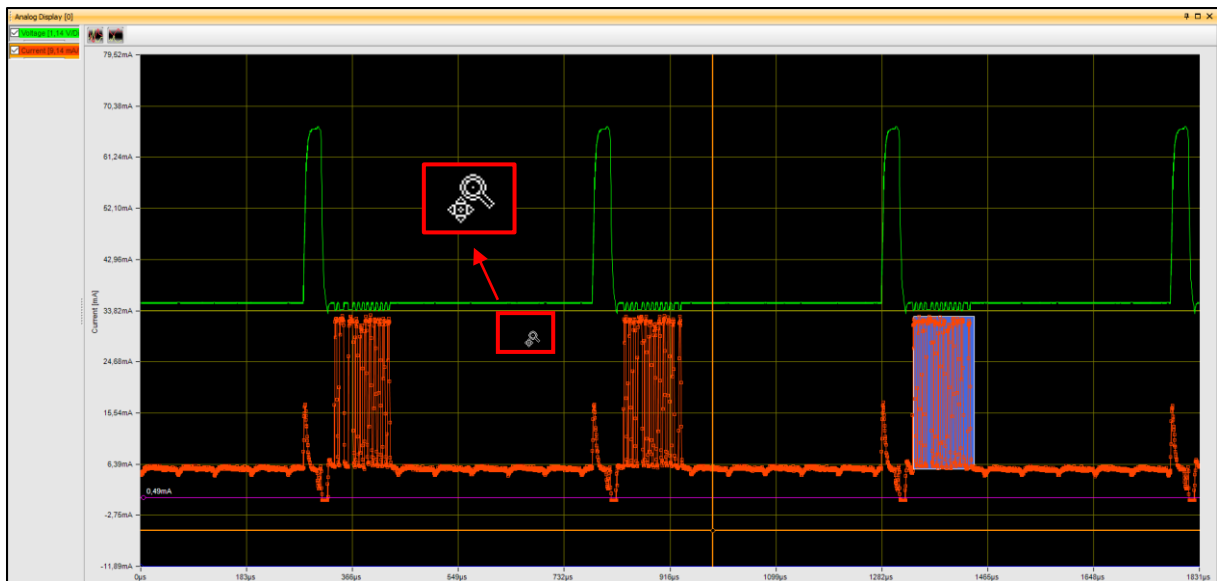
Shortcut: Moving the graphical measurement

If the Analog Display or Sensor Signals is selected and you are inside the diagram with your mouse, you can hold down **CTRL** to get a hand with which you can move the diagram back and forth as you like.

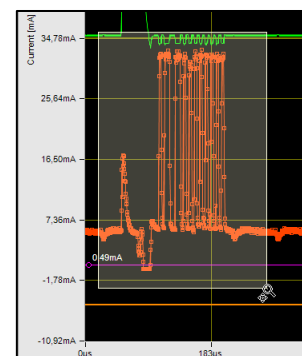


Shortcut: Zooming in the graphical measurement

If the Analog Display or Sensor Signals is selected and you are inside the diagram with your mouse, you can hold down **SHIFT** to zoom in or out with the mouse wheel.



If you want to zoom in on a certain area, you can move around it with the **left mouse button** while holding down **SHIFT**.



Simulyzer-Software Operating Help

Shortcut: Shifting the graphical measurement

To be able to drag the green (Voltage) and the red (Currency) line apart or on top of each other, you can click with the **Left Mouse Button** in the upper left corner of the Analog Display and move it as you like. In addition, you can hide or show the individual lines by checking the respective box. The same applies to the Sensor Signals diagram field.

The buttons next to it offer a similar function. Here you can place the measurements directly above or below each other with the predefined option. As with the manual move function, this function also applies to the diagram field Sensor Signals.

