

Simulyzer-Software Operating Help

-Seskion GmbH-

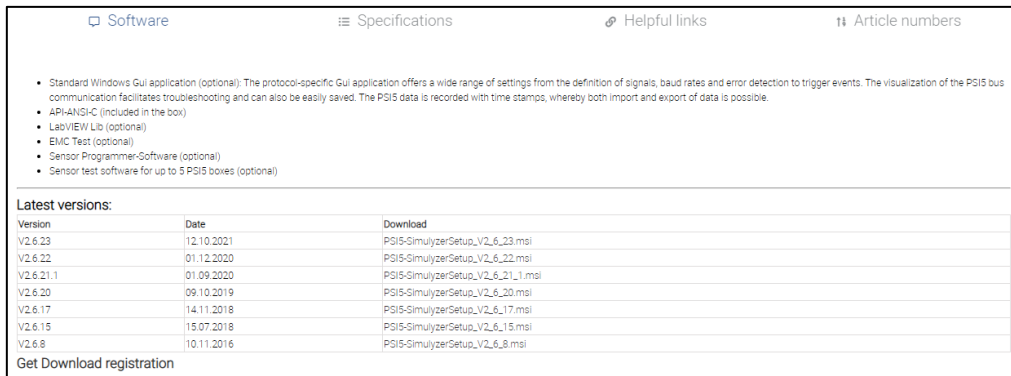
Content:

- Download the Simulyzer software
- Starting the Simulyzer software
- Connecting the Simulyzer
- Overview of the graphical user interface
- First measurement with connected Simulyzer hardware
- Shortcuts
 - Moving the graphical measurement
 - Zooming in the graphical measurement
 - Shifting the graphical measurement

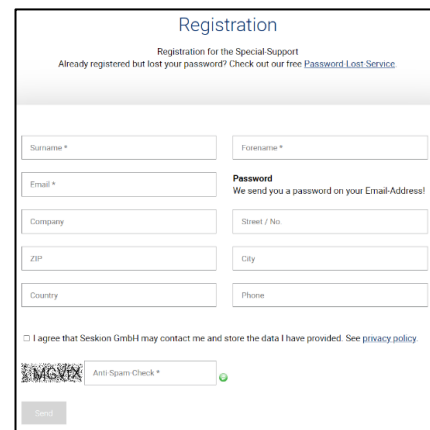
Version:	(1.0) 05.11.2021 - Creation
	(1.1) 03.12.2021 - Small improvement (Download)
	(1.2) 21.12.2021 – Connecting the Simulyzer

Simulyzer-Software Operating Help

The software for our simulyzer boxes can be downloaded from our website without any problems. Here in the example this is illustrated with the PSi5 Simulyzer software. For any other software this process is identical. First go to <https://www.seskion.de/produkte/> to select your hardware or software. If you have then selected one of our products, you will find the following overview on the page:



If you are downloading software from us for the first time, you will need to register for free. To do this, click on **Get Download registration** at the bottom left. You will now be forwarded to the registration page, where you can enter three mandatory details as well as other optional details.



Registration
Registration for the Special-Support
Already registered but lost your password? Check out our free [Password Lost-Service](#)

Surname * Forename *

Email * Password
We send you a password on your Email-Address!

Company Street / No.

ZIP City

Country Phone

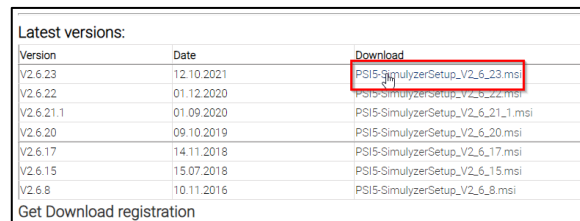
I agree that SesKion GmbH may contact me and store the data I have provided. See [privacy policy](#)

Anti-Spam Check *

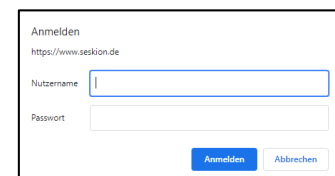
Send

To be able to download the latest software now, please go to the listed software versions as shown in the first screenshot. To download the latest version, please look at the version number and date. For the download please click on the respective version on the right side under Download.

Now you can download the latest version of our Software. Make sure that you have the newest one to get all the newest features. The software is continuously updated.



A login window will appear where you can log in with your registered e-mail address and the password we sent you.



Anmelden
<https://www.seskion.de>

Nutzername

Passwort

Anmelden Abbrechen

If the Microsoft Defender should report, you can ignore it and select **Run anyway**.

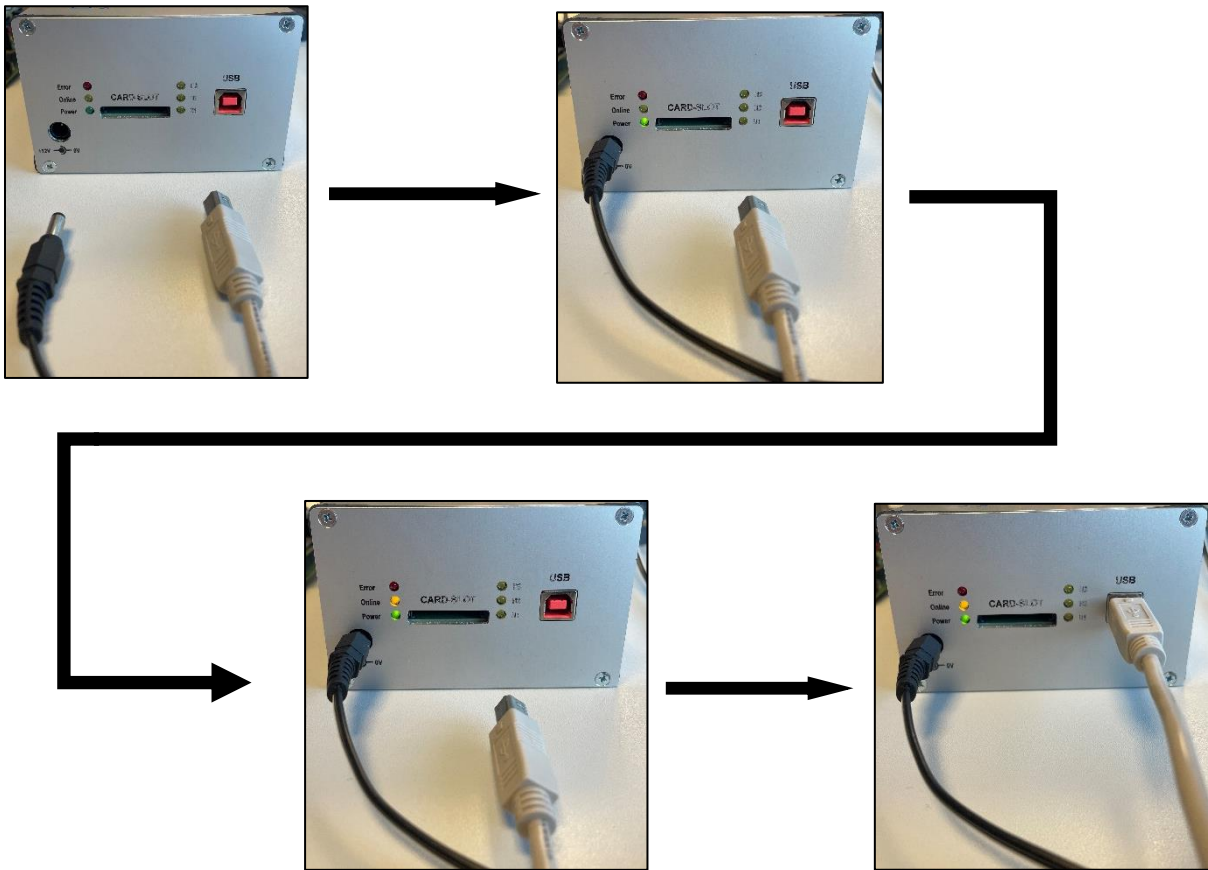


Install the software as specified. A desktop link will be created automatically.

All files can be found under:
„C:\Program Files (x86)\SesKion GmbH“

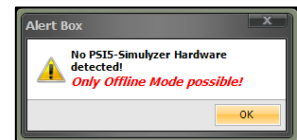
Simulyzer-Software Operating Help

If you have the Simulyzer Hardware Box, please make sure that you operate in the correct sequence:

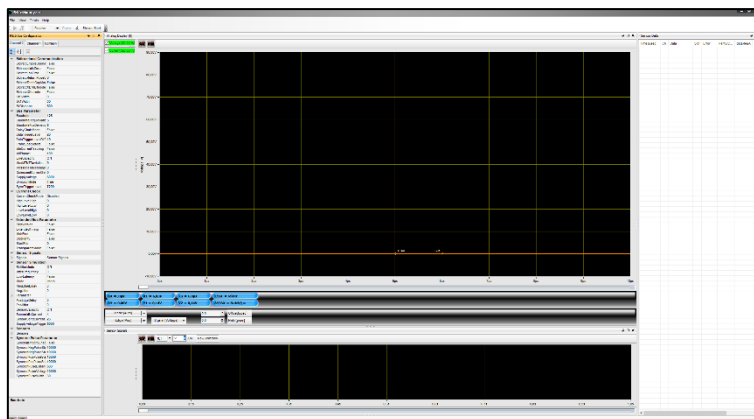


Now you can open the the matching Simulyzer Software.

If you have not yet connected a Simulyzer box to the PC, a short note will appear to inform you that no box has been detected and that the software will therefore only work in offline mode.



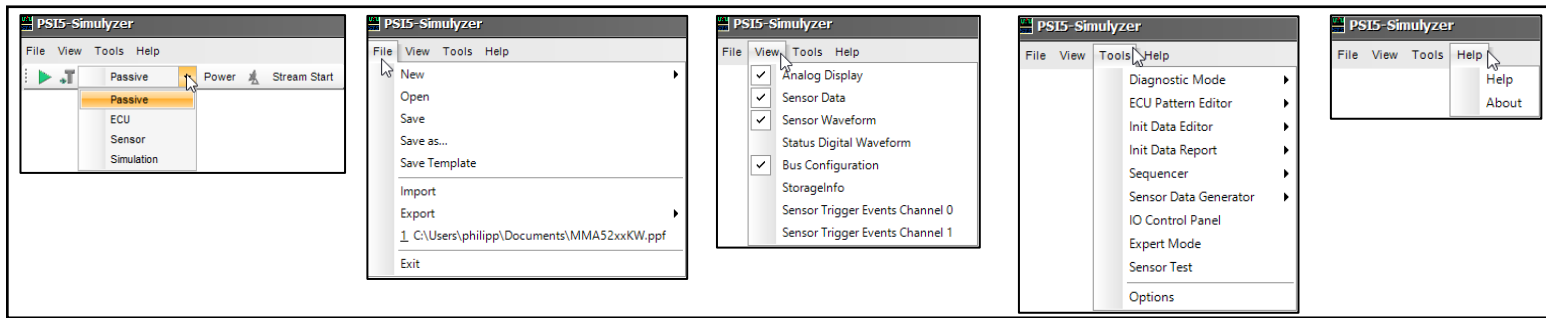
If a Simulyzer box is connected to the PC, or if you have closed the message box with **OK**, you will now see the interface of the Simulyzer software:



Without a corresponding software license, which is bound to either PC-ID or Simulyzer-Box, you can only view the interface and the individual menu items. For measurements and further functionalities a license is mandatory.

Simulyzer-Software Operating Help

Overview of the graphical user interface



Graphical representation
Sensor Signals

Graphical representation
Analog Display

Simulyzer-Software Operating Help

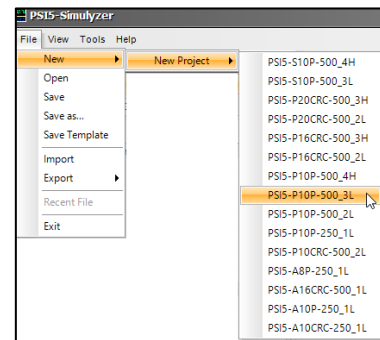
In order to be able to work with the Simulyzer software, a new project must be created at the beginning after connecting the Simulyzer and the sensor. To do this, use the menu group **File** and the command **New** and **New Project**. Which version your PSI5 sensor has you can read in the features from the manual of the respective sensor. In this example a NXP sensor of the MMA52xxKW family with a PSI5-P10P-500-3L compatibility is used.

PSI5 Inertial Sensor

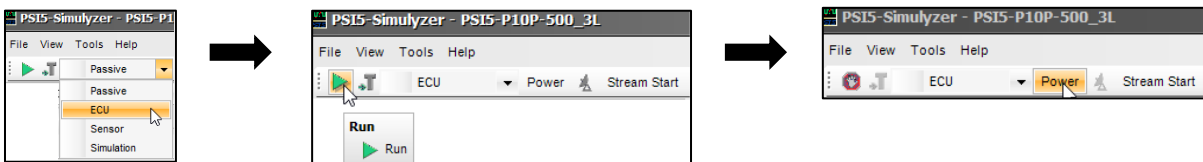
The MMA52xxKW family, a SafeAssure solution, includes the AKLV27 and PSI5 Version 1.3 compatible overdamped X-axis satellite accelerometers.

Features

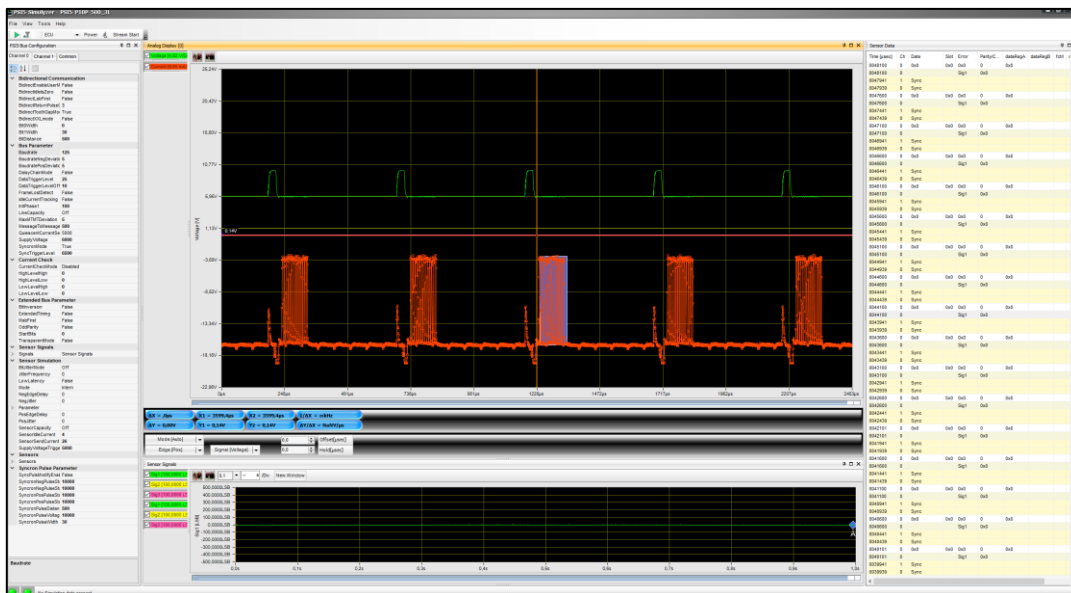
- ±60g to ±480g Full-Scale Range
- Selectable 400 Hz, 3 Pole, or 4 pole Low-Pass Filter
- Single Pole High Pass Filter with Fast Startup and Output Rate Limiting
- **PSI5 Version 1.3 Compatible**
 - **PSI5-P10P-500/3L Compatible**
 - Programmable Time Slots with 0.5 µs Resolution
 - Selectable Baud Rate: 125 kBaud or 190.5 kBaud
 - Selectable Data Length: 8 or 10 bits
 - Selectable Error Detection: Even Parity, or 3-bit CRC
 - Optional Daisy Chain with External Low Side Switch
 - Two-Wire Programming Mode



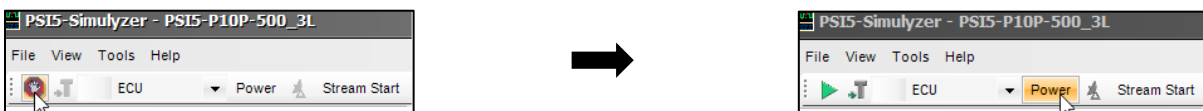
Next, start a measurement by first selecting the **ECU mode** and then selecting the **green arrow** and **Power**.



You will now see that on the right side the individual data with time stamp are listed in tabular form. In the middle this is graphically represented.



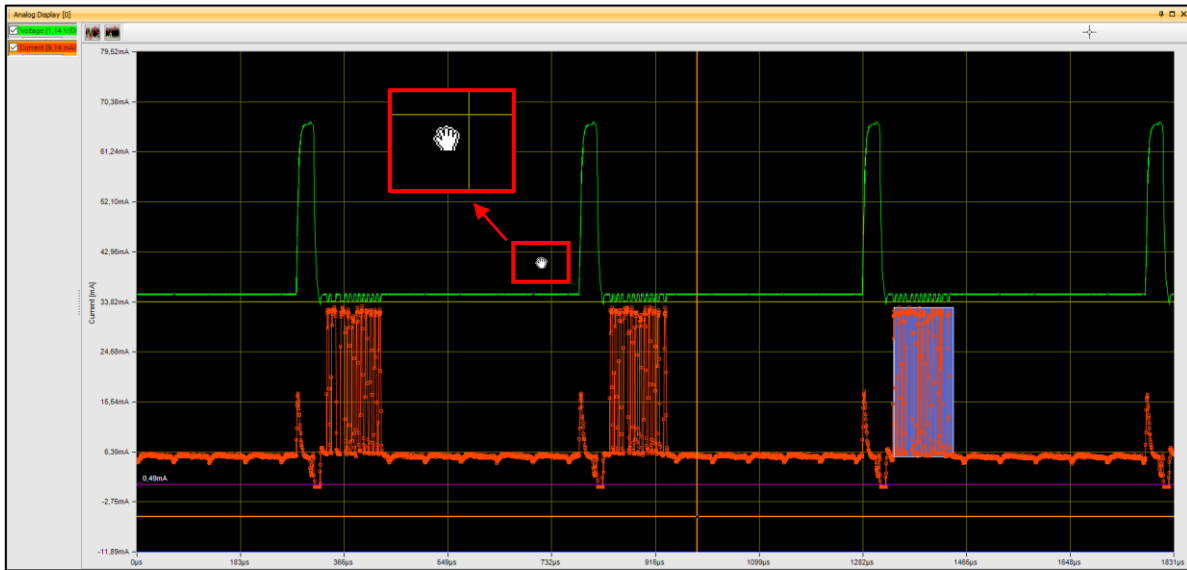
To stop the measurement, press the **red symbol** and then the **power** button to end the measurement completely.



Simulyzer-Software Operating Help

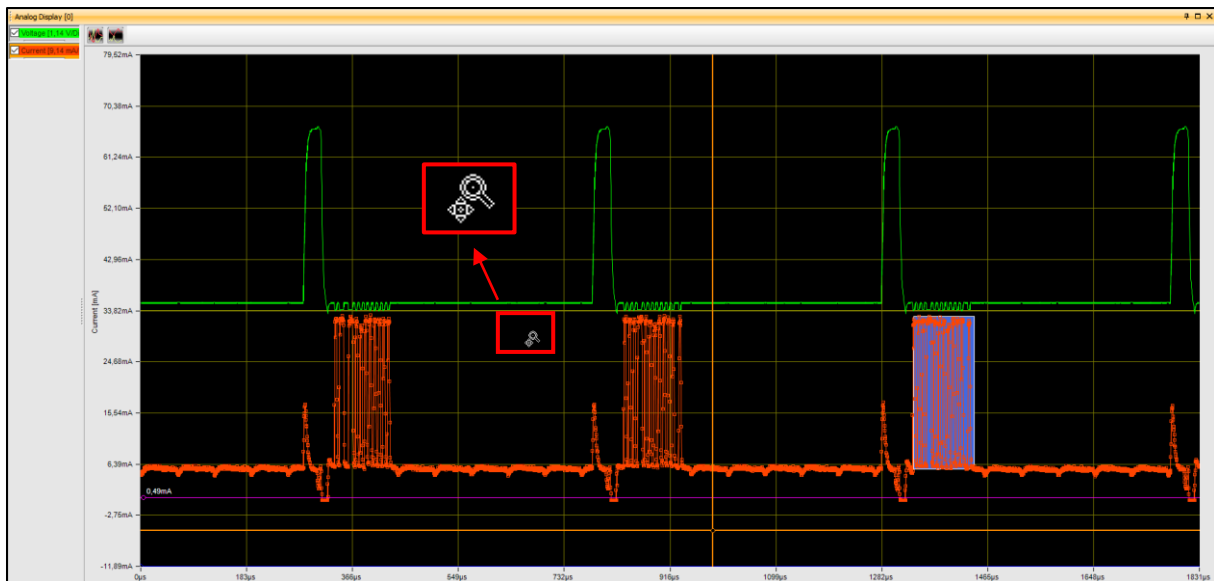
Shortcut: Moving the graphical measurement

If the Analog Display or Sensor Signals is selected and you are inside the diagram with your mouse, you can hold down **CTRL** to get a hand with which you can move the diagram back and forth as you like.

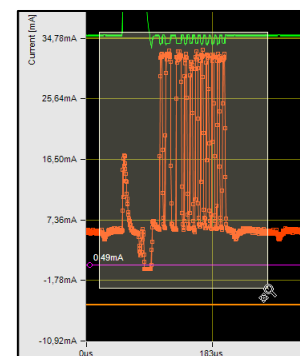


Shortcut: Zooming in the graphical measurement

If the Analog Display or Sensor Signals is selected and you are inside the diagram with your mouse, you can hold down **SHIFT** to zoom in or out with the mouse wheel.



If you want to zoom in on a certain area, you can move around it with the **left mouse button** while holding down **SHIFT**.



Simulyzer-Software Operating Help

Shortcut: Shifting the graphical measurement

To be able to drag the green (Voltage) and the red (Currency) line apart or on top of each other, you can click with the **Left Mouse Button** in the upper left corner of the Analog Display and move it as you like. In addition, you can hide or show the individual lines by checking the respective box. The same applies to the Sensor Signals diagram field.

The buttons next to it offer a similar function. Here you can place the measurements directly above or below each other with the predefined option. As with the manual move function, this function also applies to the diagram field Sensor Signals.

