

How many Simulyzer do I need

-Seskion GmbH-

Content:

- Clarify basic requirements
- Point - to - Point connection of sensors
- Bus connection with different timeslots
- How many Simulyzer do I need?

Version:	(1.0) 09.12.2021 – Creation

How many Simulyzer do I need

Basic requirements

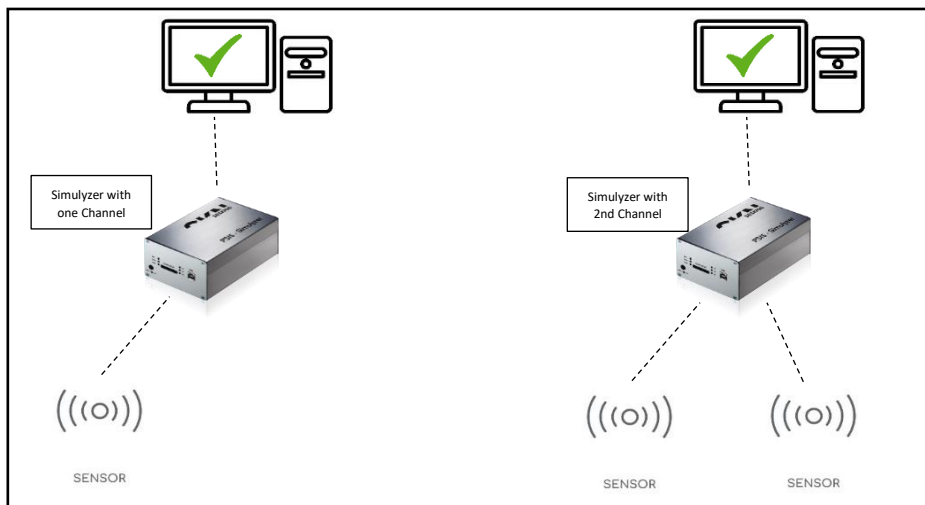
Which connection type do my sensors have? Are they connected point-to-point, or do they have a bus connection and can therefore run over different timeslots on one interface? Are the sensors synchronous or asynchronous sensors?

These questions must be clarified first on your part.

The following information is not for the DS13-Simulyzer! The DS13-Simulyzer has only one interface and can't be used as in the following.

Point – to – Point connection of sensors

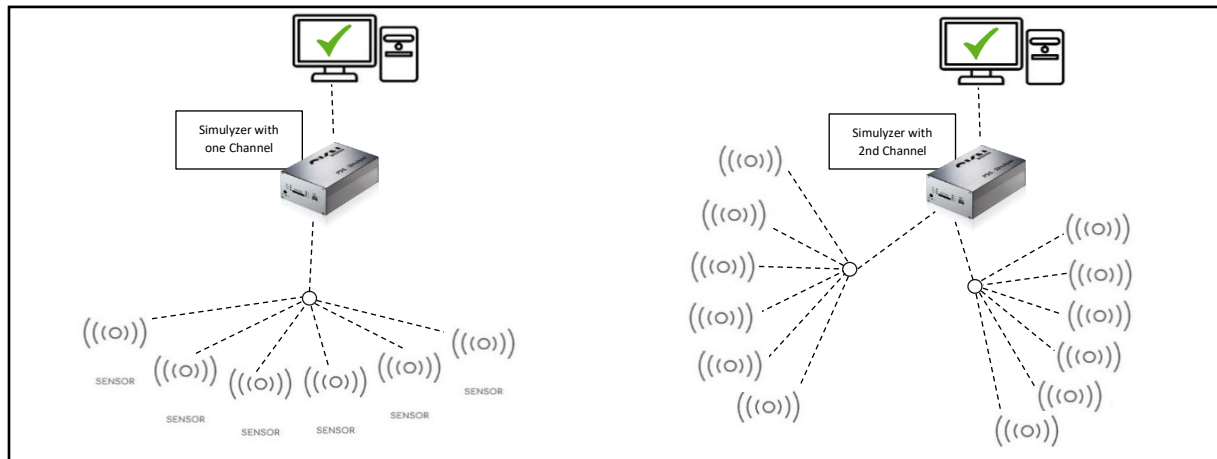
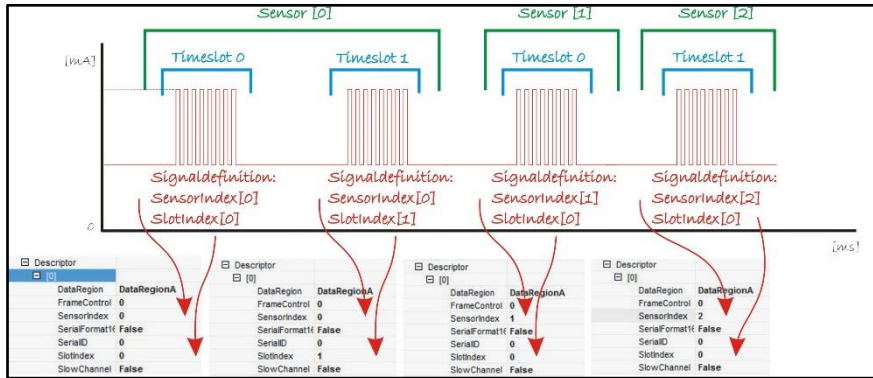
This means that only one sensor can be measured and/or simulated on each interface. This means that you need one interface (channel) per sensor to connect your desired number of sensors. If you have an asynchronous sensor, this is also the only possibility. With the optional 2nd channel you can then connect two sensors to one Simulyzer.



How many Simulyzer do I need

Bus connection with different timeslots

With a bus connection, up to 6 sensors can be connected in parallel to one interface at the PSI5-Simulyzer. So up to 12 sensors can be connected in parallel to a simulyzer with 2nd channel. At the SPI-Simulyzer max. 4 sensors per interface can be connected because only 4 CS lines are available. Here the timeslots must be configured in such a way that they do not overlap. This functionality is used at synchronous sensors.



How many Simulyzer I need?

Now you can use the information to specify the number of Simulyzer you need. We are still glad to help you with any questions you may have. Just contact us for this purpose.