

Exchange Fuse Simulyzer-Boxes

Safety instructions

To avoid affects to persons and damages at the devices the following safety instructions have to be noticed!

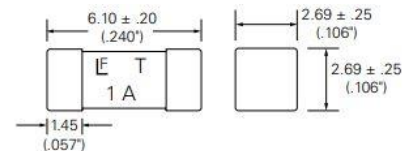
- Only qualified personnel is allowed to handle this device!
- Before opening, the power supply has to be switched off!
- All tools have to been electrostatically discharged before usage!

Hardware version	Ab 2.0
Technical data sheet version:	1.0
Created:	22.1.2020 hz

Necessary equipment:

- Phillips screwdriver – to open the device.
- Tweezers – to handle the SMD fuse (electro statically discharged!).
- Usable fuse:
For a failure-free service of the Simulyzer-Box the following fuses have to be used:

Simulyzer	Fuse	Manufacturer Farnell Articel no.:	Manufacturer Farnell Order no.:
DSI	1A slow blow	0454001	1823133
PSI5	1A fast acting	0453001	1677656
SPI	1A fast acting	0453001	1677656
SENT	1A fast acting	0453001	1677656



Procedure:

Before opening the Simulyzer Box ensure that the power supply is disconnected!

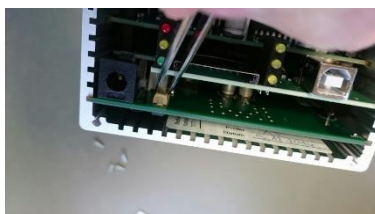


Position of the fuse
within the device

The fuse is placed within the device
directly behind the front panel



Open the appropriate frontpanel of the device
(4 screws).



Exchange the open fuse by using the tweezers.

Close the device by screwing the front panel
(4 screws).

More information and tutorials

SesKion GmbH
Karlsruher Straße 11/1
D-70771 Leinfelden-Echterdingen
Phone : +49 (711) 990 58 14
Fax: +49 (711) 990 58 27
Email: info@seskion.de
URL: <http://www.seskion.de>